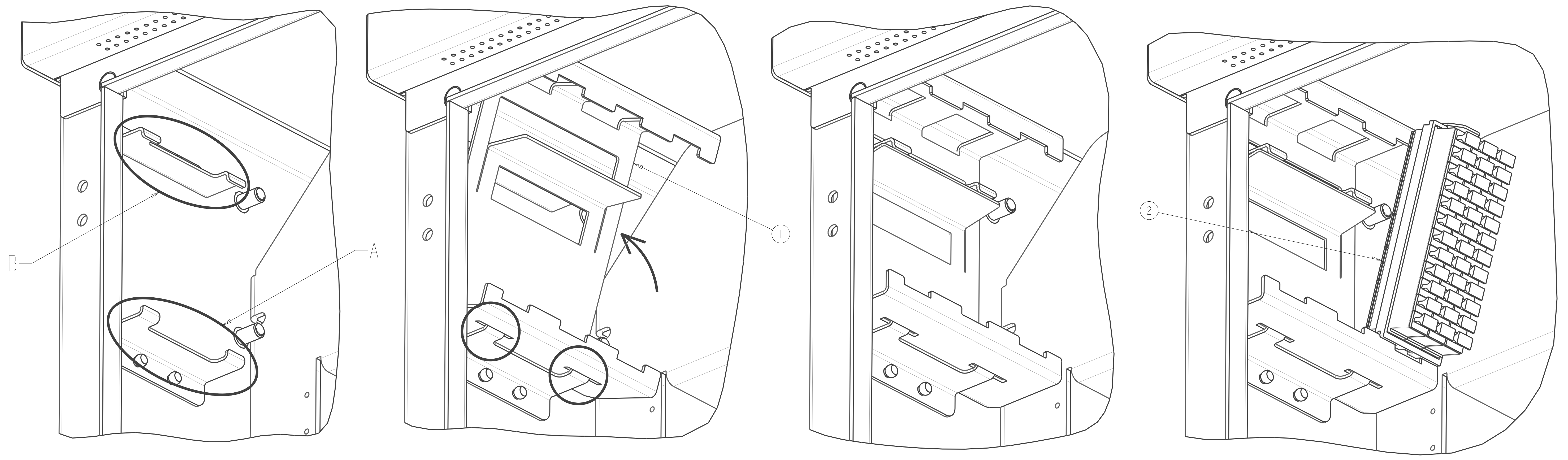


REV	DESCRIPTION OF CHANGE	BY	ECO	REV DATE
01	CREATED	CMP	50440	7/21/22

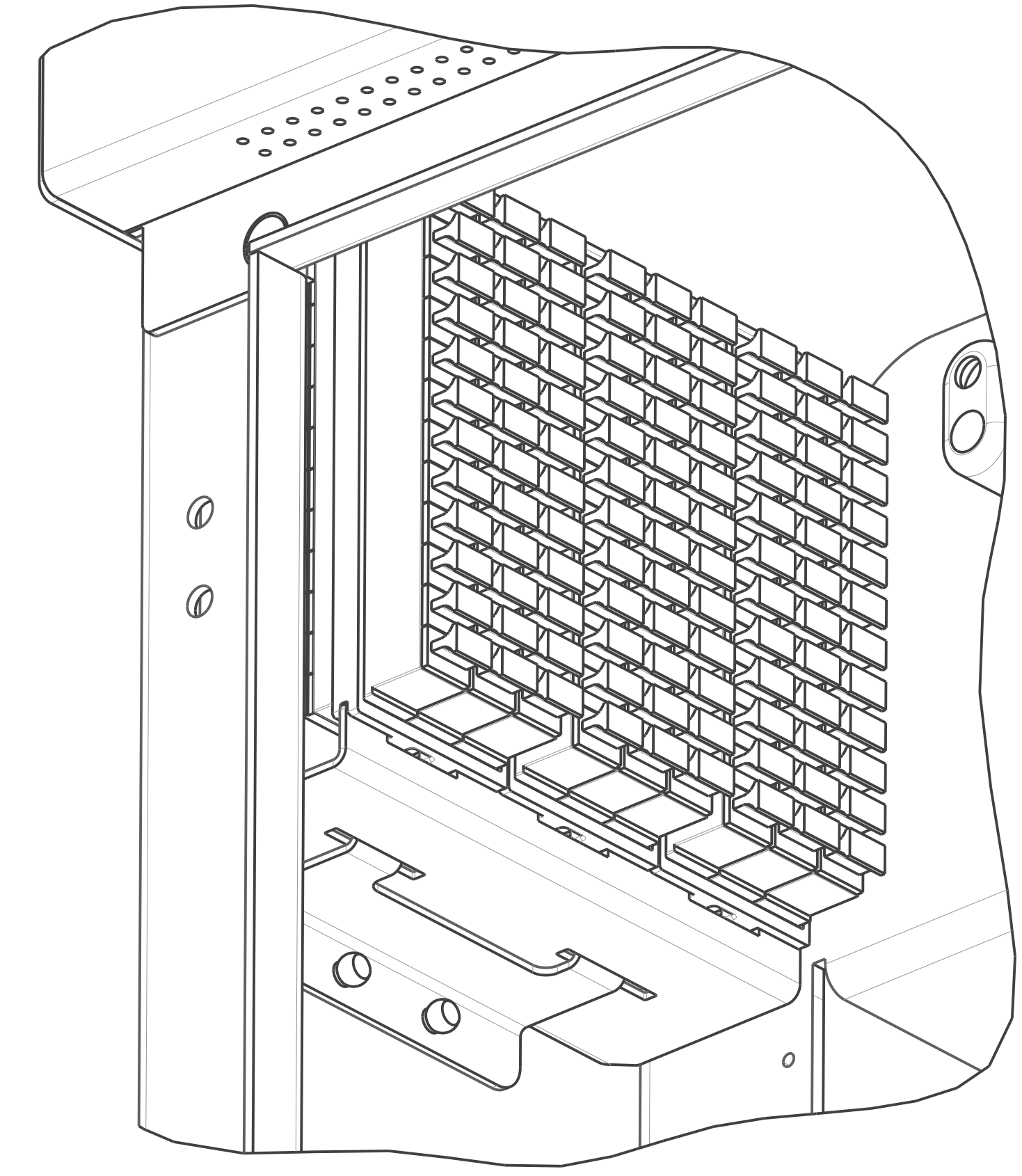


1. REMOVE ALL EXISTING COMPONENTS FROM STAGING AREA, INCLUDING ANY FOAM.

2. INSTALL THE STAGING BRACKET BY ENGAGING THE BRACKET SLOTS TO THE LOWER TABS (A) THEN TIPPING THE BRACKET BACK SO THAT THE BRACKET SPRING ENGAGES THE UPPER TABS (B).

3. LOWER TABS ENGAGED WITH BRACKET SLOTS AND UPPER TABS ENGAGED WITH BRACKET SPRING TAB.

4. INSTALL 12 X 3 STAGING PLATE BY ENGAGING STAGING PLATE CHANNEL WITH THE LOWER EDGE OF BRACKET THEN TIPPING THE STAGING PLATE BACK SO THAT STAGING PLATE SPRING TAB ENGAGES THE UPPER EDGE OF THE BRACKET. REPEAT FOR ADDITIONAL STAGING PLATES.



5. AFTER INSTALLING STAGING PLATES, MOVE JUMPERS FROM OLD STAGING TO THE NEW STAGING

2	3	STAGING ASM., 12 X 3, SC	ASSEMBLY COMPONENTS	022559	022559
1	1	BRACKET, STAGING ADAPTER, 288, 576	.063 5052-H32 ALUM.	022580	022580
ITM	QTY	DESCRIPTION	MATERIAL	PART NUMBER	CAD NUMBER

UNLESS OTHERWISE SPECIFIED

ASME Y14.5M - 1994

X.X +/- 0.1
 X.XX +/- 0.01
 X.XXX +/- 0.005

MACH ANG ± 0°30'
 FORMED ANG ± 2°
 CHAMFER ± 2°

BREAK EDGES:
 R.01 OR 45° ± .01 MAX
 INTERNAL MACH R.02 MAX
 DIMENSIONS ARE IN INCHES
 DO NOT SCALE DRAWING

COPYRIGHT CLEARFIELD INC.
 THIS DOCUMENT IS THE
 PROPERTY OF CLEARFIELD INC.
 ITS USE IS AUTHORIZED ONLY FOR
 RESPONDING TO A REQUEST FOR
 QUOTATION OR THE PERFORMANCE
 OF WORK FOR CLEARFIELD INC. ALL
 QUESTIONS SHOULD BE DIRECTED TO
 CLEARFIELD INC., ENGINEERING DEPT

MATERIAL:
 ASSEMBLY COMPONENTS

FINISH:

DESIGNED BY CMP 6/16/22
 DRAWN BY
 APPROVED BY

CLEARFIELD
 7050 WINNETKA AVE N STE 100
 BROOKLYN PARK, MN 55428
 (800) 427-2937 (763) 476-6666
www.seeclearfield.com

KIT, 288 STAGING EXPANSION

SIZE DRAWING NO: D 022908
 SCALE: 1.000 SHT 1 OF 1

PART NUMBER: 022908
 REV. 01