

WIRELESS PRODUCT APPLICATIONS



**Accelerating Cost-Effective
Fiber Fed Deployments**

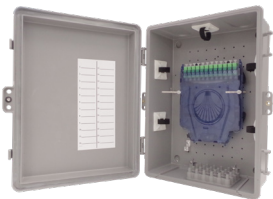


CLEARFIELD
SeeClearfield.
com

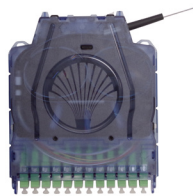
In the quickly evolving world of wireless deployments, finding fiber connectivity products that are both craft-friendly and versatile is a must. Clearfield's product designs for wireless applications are both. Whether the need is for a large or small venue DAS deployment or an outdoor small cell deployment, Clearfield® products make it easy to provide the connectivity required.

Because wireless deployments differ not only in size, but by environment, Clearfield has developed a flexible platform that allows wireless providers to easily scale from a small venue to something as large as an NFL football stadium. This platform adapts to both indoor and outdoor use, meaning providers no longer have to have large lists of SKU's for each of their venues. Simply select and add the network components as needed to meet the size requirements. Fast, craft-friendly connectivity is achieved with Clearfield's plug-and-play products that further simplify deployments and reduce labor costs by eliminating the need to splice at antenna locations and hubs. Even the newest technician can bring a site online in minutes by easily plugging in the network element.

The following pages illustrate how Clearfield products deploy in a wireless network to turn-up sites faster, with less labor and without sacrificing quality.



YOURx™ Flex Box



Clearview® Blue



Clearview xPAK



StreetSmart Fiber Hand-Off Box



YOURx-Aerial Terminal



YOURx-Terminal



StreetSmart Small Count Fiber Hand-Off Box

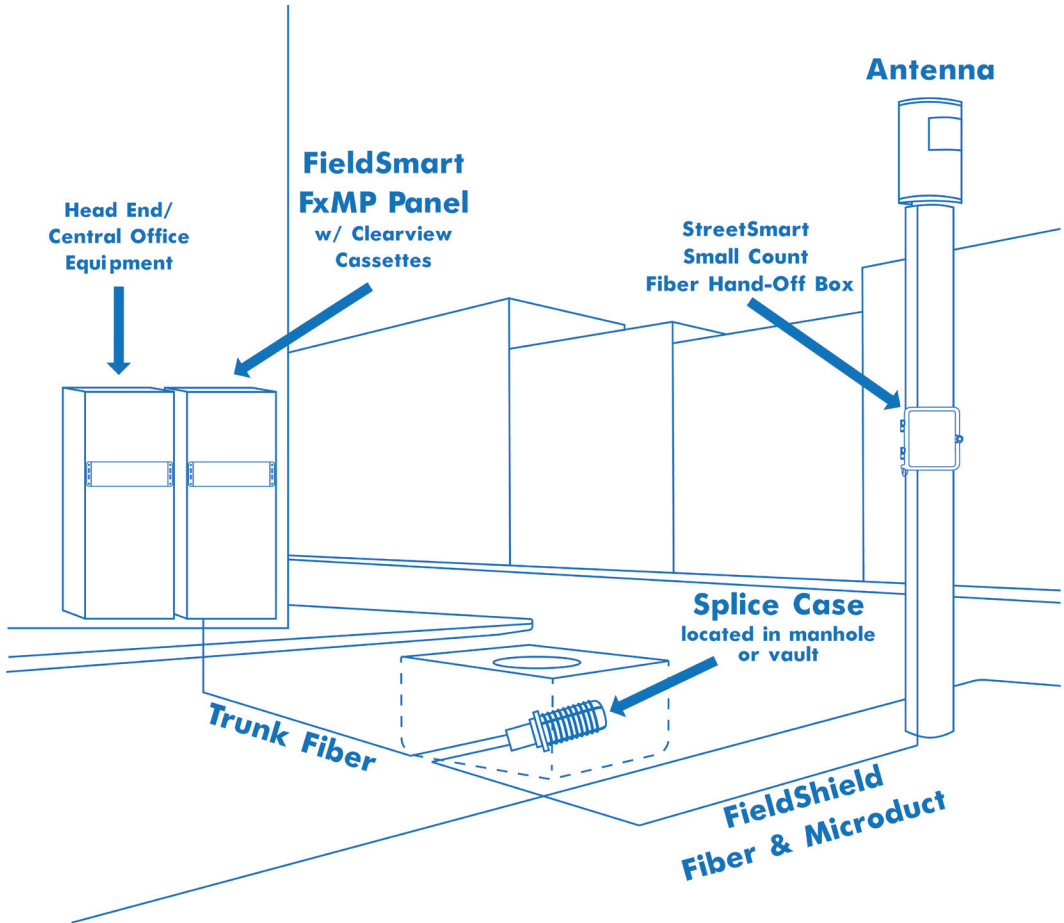


FieldShield® MPO Pushable Fiber Assemblies



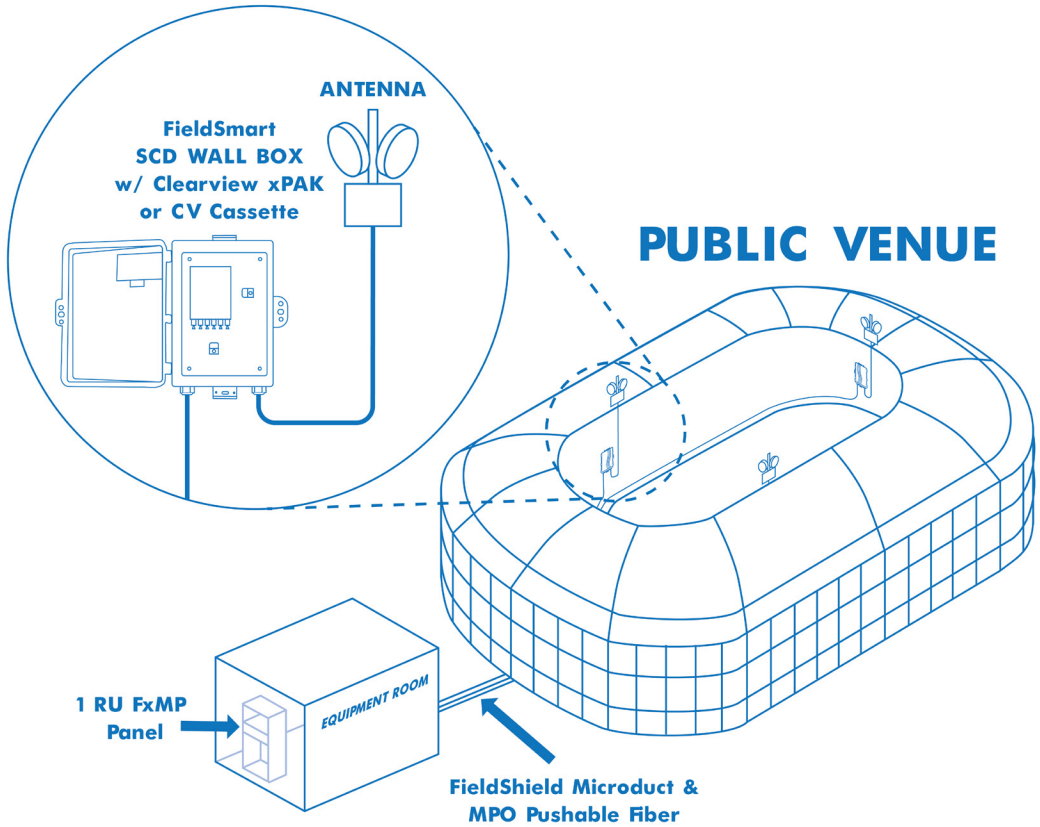
FieldShield Microduct Fiber Assemblies

Wireless - ODAS



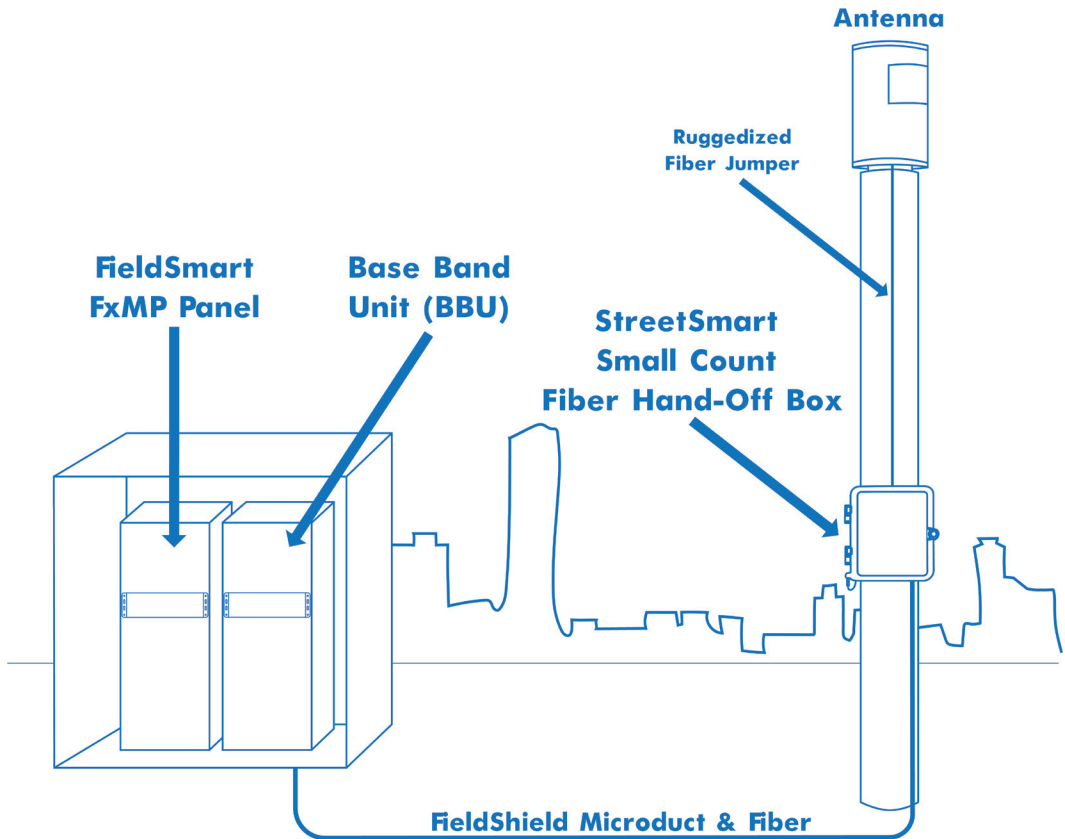
	Product	Description
Frame	FMA-A1A-E	7' EIA Universal Seismic Frame, 19"W
Panel	G-GBB-144-F1F-BZZ	6"H Patch & Splice Panel with 144 LC/UPC Connectors
Vaults	V6A-AZP	24 x 36 x 24" Vault with Solid HDPE Lid
	V6A-BZP	24 x 36 x 24" Vault with Split HDPE Lid
	V7A-AZP	30 x 48 x 24" Vault with Solid HDPE Lid
	V7A-BZP	30 x 48 x 24" Vault with Split HDPE Lid
Fiber Hand-off Box	W2WS-12F-51Z-ZZZ	Streetsmart Box with MPO input to LCUPC

Wireless - IDAS



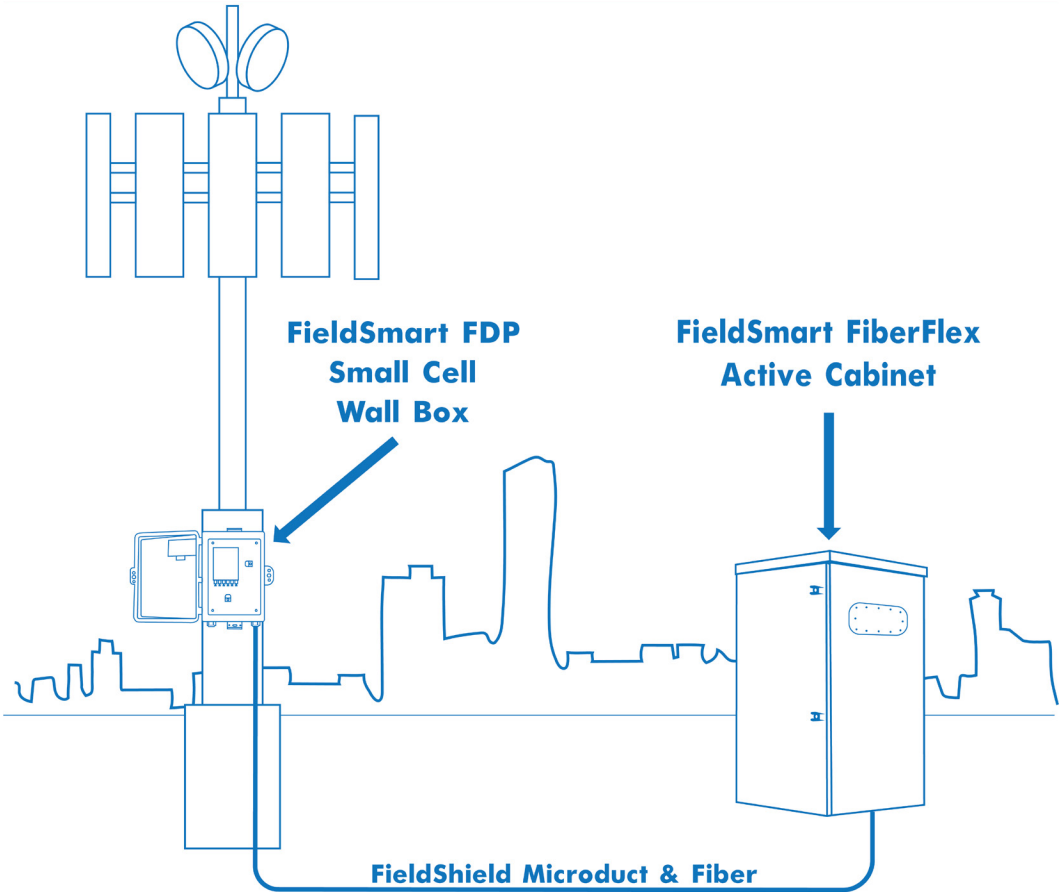
	Product	Description
Wall Box with xPAK	WRZ-012-F1B-ZZ4 XXXF	Small Cell Wall Box Loaded with LC/UPC xPAK and OSP Cable Assembly xxxF
Patchcord	PC1-002-E2B-E2B XXXF	Patchcord, Fiber, LC/UPC, Duplex, Singlemode Plenum Rated xxxx Feet

Wireless - Small Cells



	Product	Description
Wall Box	FDP-XWB1	Empty Wall Box with Sealcon Connector
xPAK	6PAK-LC-MTP-12	Clearview xPAK with MPO Input and 12 LC/UPC Output
Fiber Assembly	FS-AA1-012-PQZ-6ZZ XXXF	FieldShield Assembly with Pushable MPO to Standard MPO
Microduct	FS-DED-NT-214-PS-XXXF	FieldShield Microduct 14/10mm Direct Bury, Non-Toneable
Fiber Hand-off Box	W2WS-12F-51Z-ZZZ	Streetsmart Box with MPO input to LCUPC

Wireless - Node +0



	Product	Description
Wall Box	FDP-XWB1	Empty Wall Box with Sealcon Connector
xPAK	6PAK-LC-MTP-12	Clearview xPAK with MPO Input and 12 LC/UPC Output
Fiber Assembly	FS-AA1-012-PQZ-6ZZ XXXF	FieldShield Assembly with Pushable MPO to Standard MPO
Microduct	FS-DED-NT-214-PS-XXXF	FieldShield Microduct 14/10mm Direct Bury, Non-Toneable
Active Cabinet	R3DEC-2221E-432-C1F	FiberFlex 2000 Active Cabinet, with 750W heat exchanger, AC load center with generator connect, flatpacks S 48 VDCAC LOAD CENTER WITH GENERATOR CONNECT, FLATPACK S 48 VDC RECTIFIER, SUPPORTS 1 BATTERY STRING, 576 SC/ APC DISTRIBUTION PORTS



CLEARFIELD

Learn more at www.SeeClearfield.com

P: 800.422.2537

F: 763.475.8457

Clearfield, Inc. (NASDAQ: CLFD) designs, manufactures and distributes fiber optic management, protection and delivery products for communications networks. Our “fiber to anywhere” platform serves the unique requirements of leading incumbent local exchange carriers (traditional carriers), competitive local exchange carriers (alternative carriers), and MSO/cable TV companies, while also catering to the broadband needs of the utility/municipality, enterprise, data center and military markets. Headquartered in Minneapolis, MN, Clearfield deploys more than a million fiber ports each year.

July 2021